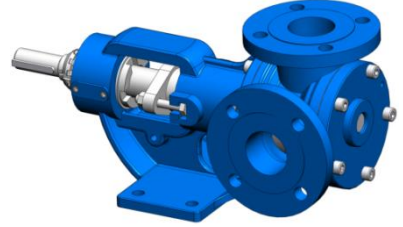
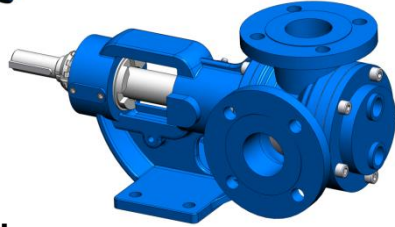
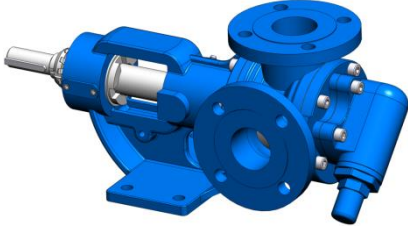
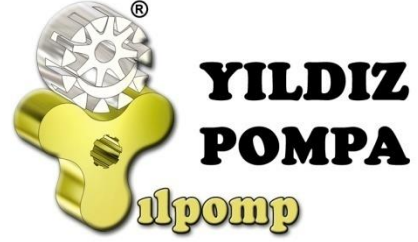


YK1½" - YKF1½" - YKYF 1½" POMPA GEAR PUMP

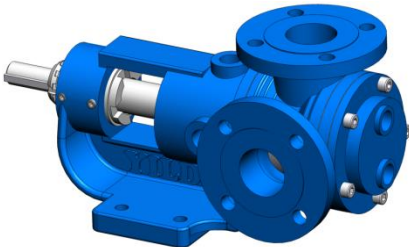


KULLANIM ALANLARI:

- Fuel Oil Servis Tankları, Gaz Yağı, Mazot Tankerlerinde
- Küçük çapta kızgın yağ sirkülasyonlarında
- Endüstrinin yarı viskoz mayilerinin pompaj işlemlerinde.
- İlaç, kimya ve deterjan sanayinde
- Gıda Sanayinde.

Malzeme Özellikleri

- Pompa Gövdesi ve Dişli: Dökme (pik) demir, Çelik döküm, Paslanmaz AISI 304- AISI 316 döküm, Sfero döküm
- Yataklar : Snbz 12 Bronz, Rulman, Karbon Grafit, Silisyum Karbür, Sert Metal Kaplama
- Sızdırmazlık: Yumuşak Salmastra, Rotatherm Salmastra, Mekanik salmastra. Keçeli Sistem



USE AREA:

- Fuel Oil Service Tanks, Gas Oil, Diesel-fuel Tanks.
- On a small scale hot oil circulations
- Half viscose liquids of industry are on pumping process
- Medicine, Chemistry and Detergent Industry
- Food Industry

Material Properties

- Pump Body and Gears: Cast iron, Steel , Stainless Steel AISI 304- AISI 316
- Bearings: Snbz 12 bronze, Bearing, Carbon Graphite, Silicon Carbide, Hard Metal Plating
- Sealing: Packing, Rotatherm Seal, Mechanical seal, Lip Seals.

YK1½" - YKF1½" - YKYF 1½"

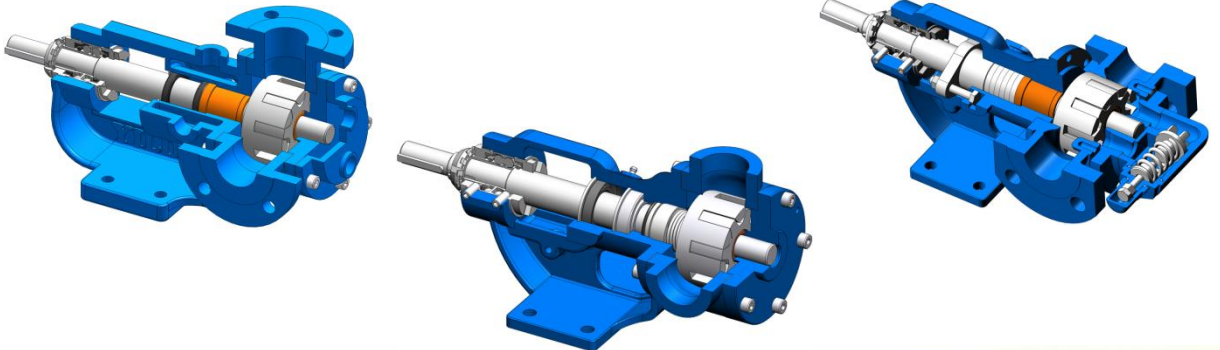
ÇALIŞMA PRENSİBİ :

Yıldız Pompa'nın "dişli içinde dişli" prensibinde sadece iki tane hareketli parça vardır. Bütün pozitif deplasmanlı YILDIZ dişli pompalarının güvenilir ve verimli çalışmasının sırrı budur. Sıvının pozitif deplasmanı (yer değiştirmesi) rotor ve avare dişlisinin dişleri arasındaki boşluğun komple dolmasıyla sağlanmaktadır.

Bütün dişli pompalarda olduğu gibi, YILDIZ POMPA'da da performansın en üst noktaya çıkmasını sınırlayıcı yegane faktör, pompalanan sıvının diğerlerine göre daha temiz olmasını istemesidir.

Pompa milinin her devrinde emiş ağızı yoluyla belli bir miktar sıvı pompaya girer. Bu sıvı rotor ile avare dişlisi arasındaki boşluğu doldurur. Pompa kapağında bulunan hilal, çıkış ağızına doğru pürüzsüz şekilde hareket eden sıvının akışını ayırır. Kendi dişleri ile hilalin iç yüzeyi arasında sıvıyı taşıyan avare dişlisi pompa kapağının desteklediği bir mil üzerinde döner. Dişleri arasında sıvıyı taşıyan rotor dişlisi pompa gövdesi ile hilalin dış yüzeyi arasında hareket eder ve pompa miline bağlıdır.

Dört şematik çizim pompa içindeki akış karakteristiğinin grafik bir gösterimini vermektedir.



WORKING PRINCIPLE :

YILDIZ's simple "gear-within a gear" principle has only two moving parts. It is the secret of dependable, efficient operation of all positive displacement YILDIZ POMPA PUMPS. The positive displacement of liquid is accomplished by the complete filling of the spaces between the teeth of the rotor and idler gears.

The only limiting factor to peak performance in YILDIZ POMPA, as with all rotary pumps, is that the liquid pumped must be comparatively clean.

With every revolution of the pump shaft a definite amount of liquid enters the pump through the suction port. This liquid fills the spaces between the teeth of the rotor and the idler. The crescent on the pump head splits the flow of liquid as it moved smoothly toward the discharge port. The idler gear, which carries the liquid between its teeth and the inside surface of the crescent and is connected to the pump shaft.

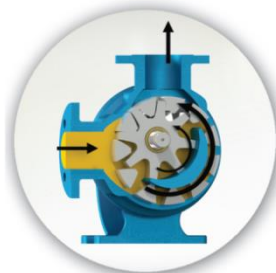
The four schematic drawings at side give a graphic illustration of flow characteristics through the pump.



Şekil 1.
Shape 1.



Şekil 2.
Shape 2.



Şekil 3.
Shape 3.



Şekil 4.
Shape 4.

Şekil 1 deki renkli kısım sıvının pompa gövdesindeki emiş ağız alanına ve rotor dişleri ve avare dişlisi dişleri arasındaki dişli boşluğu alanına girişini gösterir. İki siyah ok pompanın dönüş ve sıvının ilerleyişini gösterir.

Şekil 2 "Dişli içinde dişli" prensibinde çalışan dişliler ile pompa içinde sıvının ilerleyişine dikkat edin. Aynı zamanda, pompa kapağı üzerindeki hilal şeklinin sıvıyı nasıl böldüğüne ve emiş ile boşaltma ağızları arasında bir keçe (conta) gibi vazife gördüğüne dikkat ediniz.

Şekil 3. Bu resim pompanın iç kısmının dolup sıvının boşaltma ağız alanına itilmesinden hemen önceki durumunu göstermektedir. Avare ve rotor dişlilerinin dizaynının sıvı için nasıl bir kapalı cep oluşturduğuna ve bunun tam bir hacim kontrolü sağlanmasını nasıl garantilediğine dikkat ediniz.

Şekil 4. Bu görüntü pompanın tamamen dolup taşıdığı durumu ve sıvının boşaltma işleminin boşaltma ağızından ilerleyişini göstermektedir. Emiş ve boşaltma ağızlarına eşit mesafede sızdırmaz bir keçe oluşturan, sıvıyı boşaltma ağızından dışarı doğru iten, rotor ve avare dişlisinin dişleri birbiri içine geçer.

The colored portion at Shape 1 indicates the liquid as it enters the suction port area of the casing and the area between the rotor teeth and corresponding concave area between the idler teeth. The two black arrows indicate the pump rotation and progress of the liquid.

Shape 2. Notice the progress of the liquid through the pump and between the teeth of the "gear-within-a-gear" principle. Also, note how the crescent shape on the head divides the liquid and acts as a seal between the suction and discharge ports.

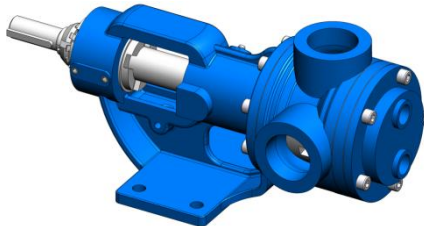
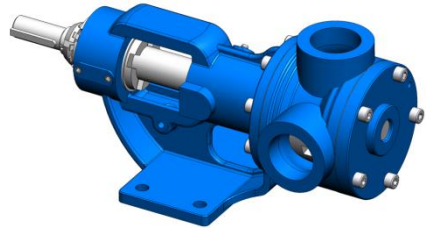
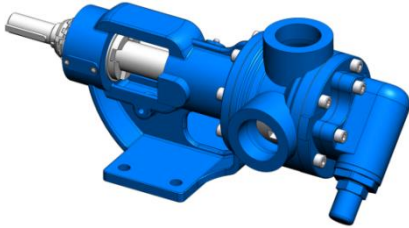
Shape 3. This illustration shows the pump in a nearly flooded condition just previous to the liquid being forced into the discharge port area. Notice how the gear design of the idler and rotor form locked pockets for the liquid so as to guarantee absolute volume control.

Shape 4. The view shows the pump in a completely flooded condition and in the process of discharging the liquid through the discharge port. The rotor and idler teeth mesh, forming a seal equi-distant between the discharge and suction ports, forcing liquid out the discharge port.

YK-1½" - YKF-1½" - YKYF-1½" POMPASINA AİT KAPASİTE VE GÜÇ TABLOSU /
CAPACITY AND POWER TABLE

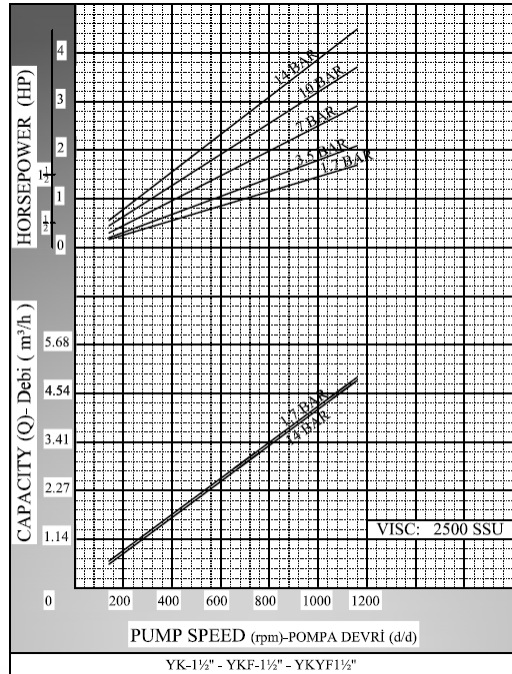
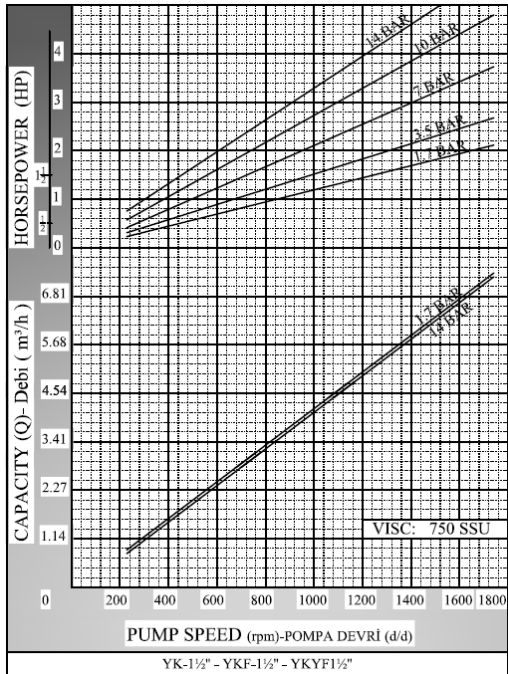
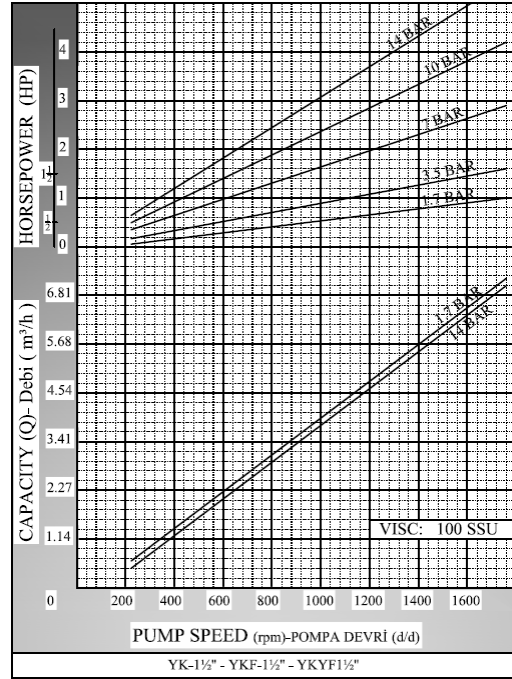
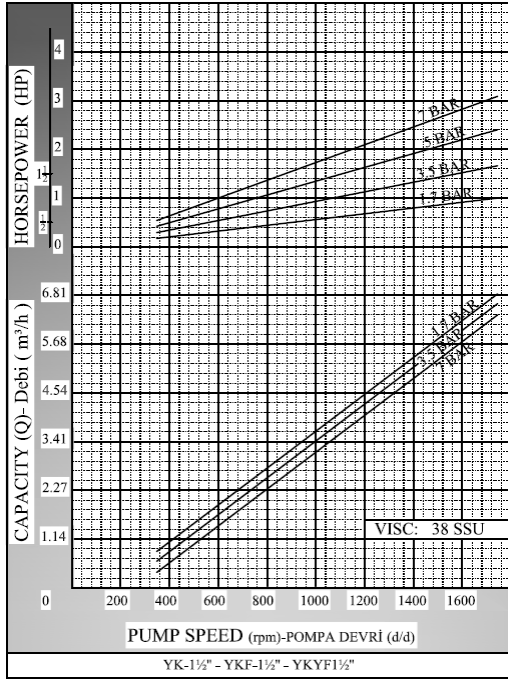
KAPASİTE (m³/h) CAPACITY (Q)	DEVİR (d/d) SPEED (rpm)	ÇIKIŞ BASINCI / PRESSURE				VİSKOZİTE VISCOSITY
		3 Bar	6 Bar	9 Bar	12 Bar	
0,200	60	0,5 HP	0,5 HP	0,75 HP	0,75 HP	75.000 SSU
0,250	80	0,5 HP	0,75 HP	1 HP	1 HP	25.000 SSU
0,300	100	0,75 HP	1 HP	1 HP	1 HP	25.000 SSU
4	900	1,5 HP	2 HP	3 HP	4 HP	750 SSU
5,7	1400	2 HP	3 HP	4 HP	5,5 HP	100 SSU

MOTOR GÜÇLERİ MOTOR POWERS		MOTOR GÜÇLERİ MOTOR POWERS		MOTOR GÜÇLERİ MOTOR POWERS	
1 HP	900 d/d (rpm)	1,5 HP	750 d/d (rpm)	2 HP	750 d/d (rpm)
1,5 HP	900 d/d (rpm)	2 HP	900 d/d (rpm)	3 HP	900 d/d (rpm)
1,5 HP	1400 d/d (rpm)	3 HP	1400 d/d (rpm)	5,5 HP	1400 d/d (rpm)
2 HP	1400 d/d (rpm)	4 HP	1400 d/d (rpm)	MOTOR GÖVDESİ MOTOR BODY	
MOTOR GÖVDESİ MOTOR BODY		MOTOR GÖVDESİ MOTOR BODY		112	
90		100			

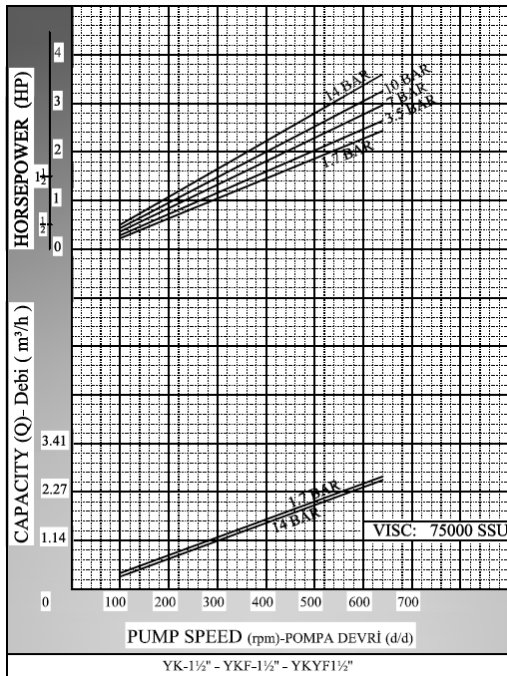
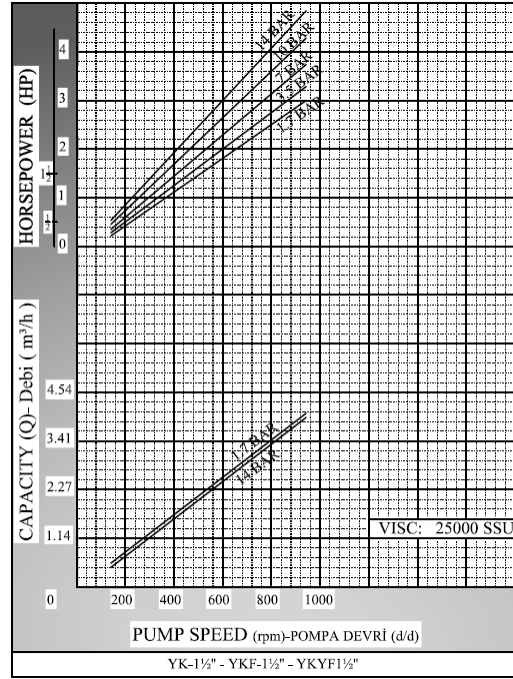
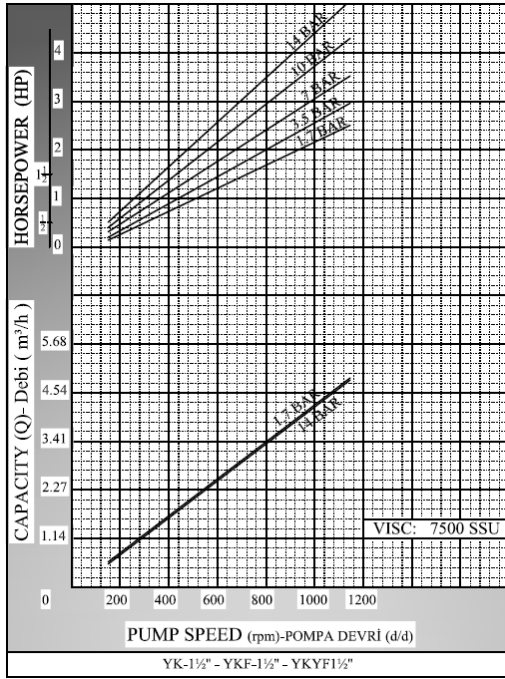


YK1½" - YKF1½" - YKYF 1½"

KAPASİTE EĞRİLERİ / CAPACITY GRAPHS

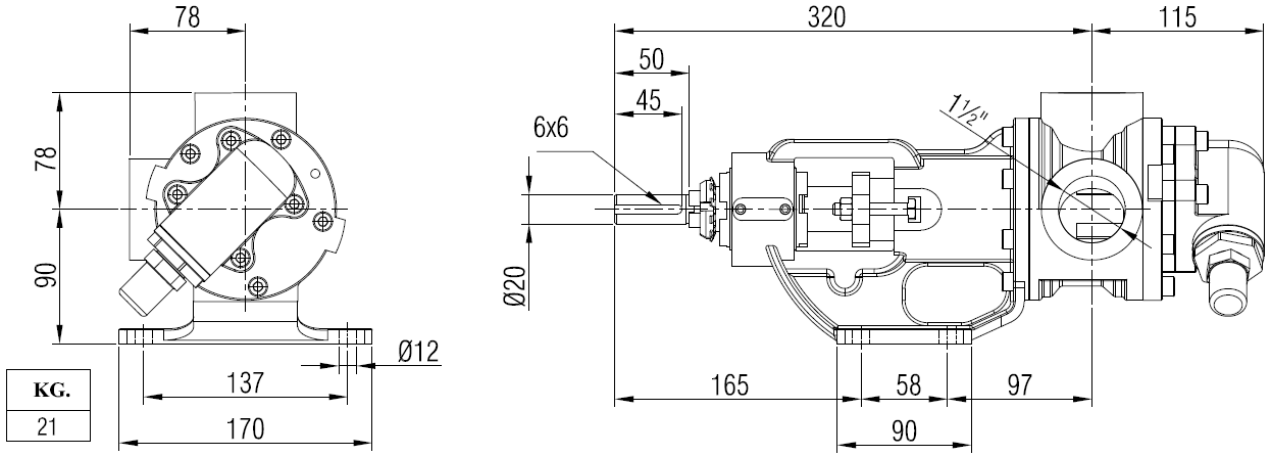


YK1½" - YKF1½" - YKYF 1½"

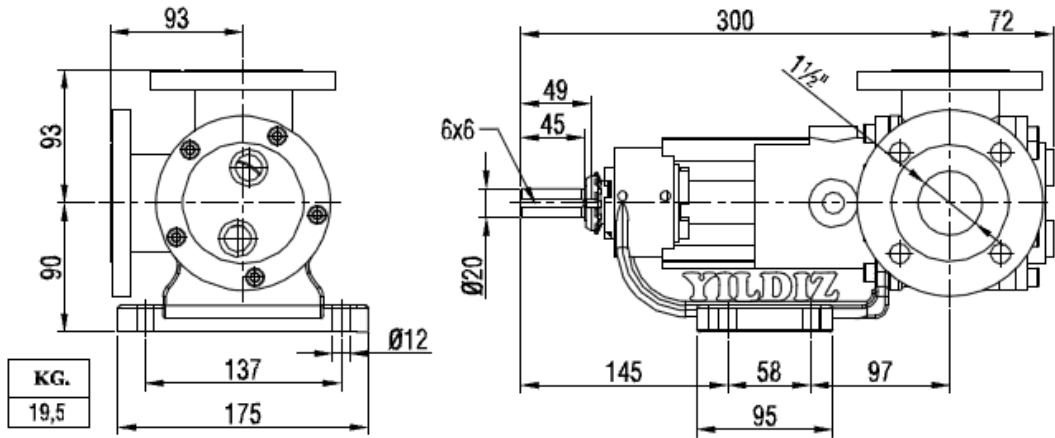


POMPA BOYUT ÖLÇÜLERİ / PUMP DIMENSIONS

YK1½" BYPASSLI / BYPASSED

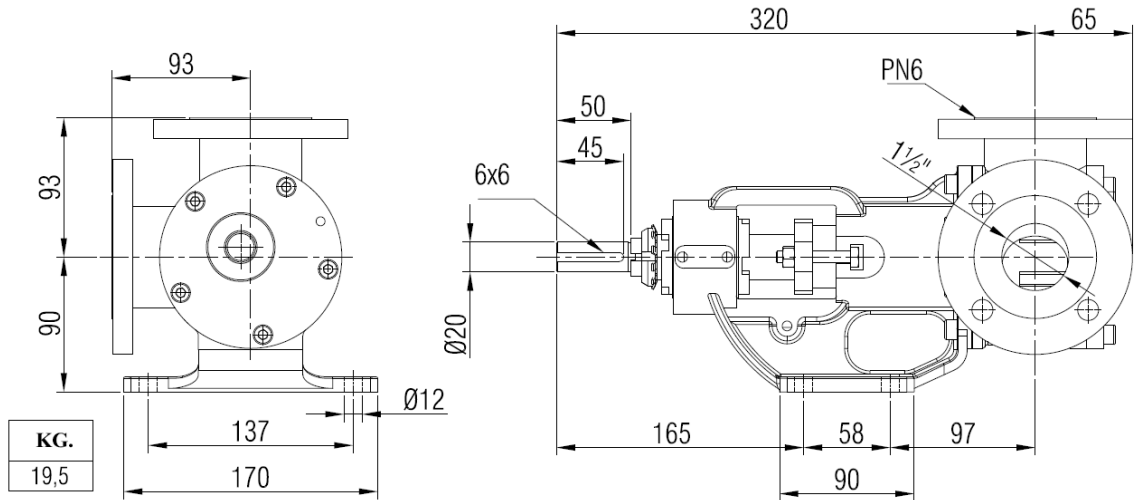


YKF1½" CEKETLİ / WITH A JACKET FROM COVER

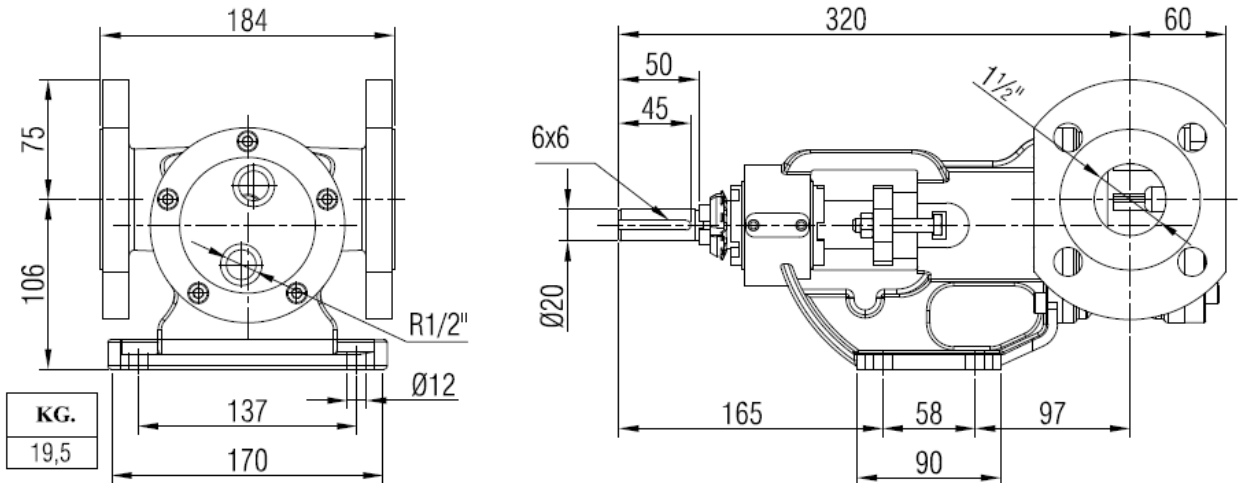


POMPA BOYUT ÖLÇÜLERİ / PUMP DIMENSIONS

YKF1½" KÖR KAPAKLI / BLIND COVERED



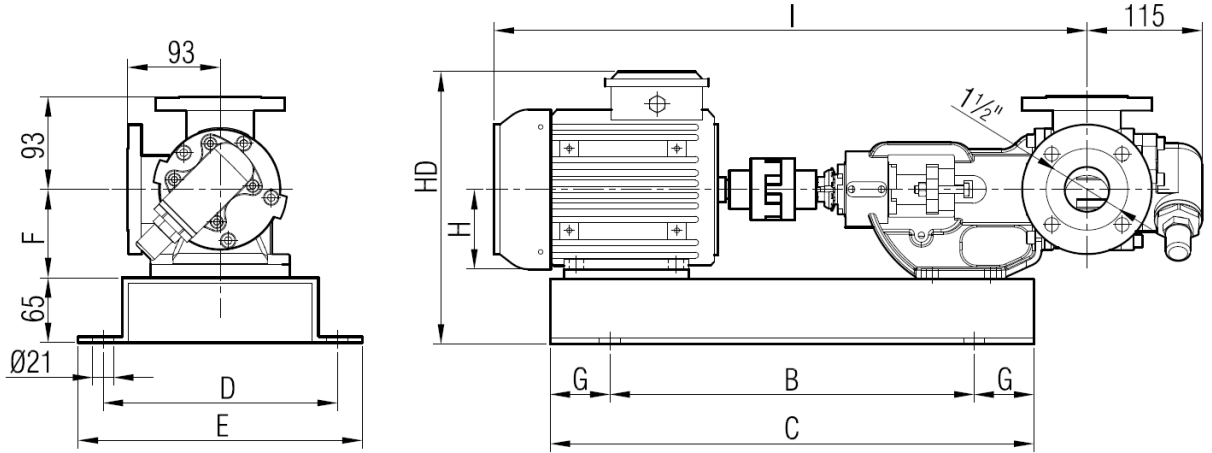
YKYF1½" CEKETLİ / WITH A JACKET FROM COVER



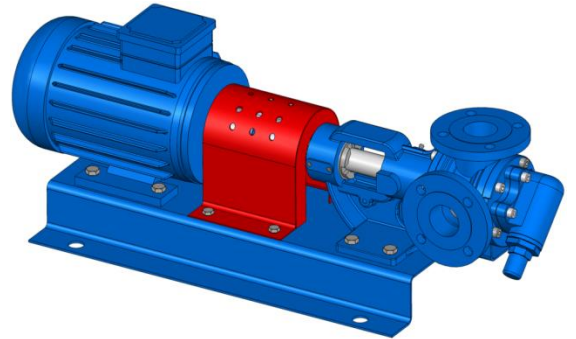
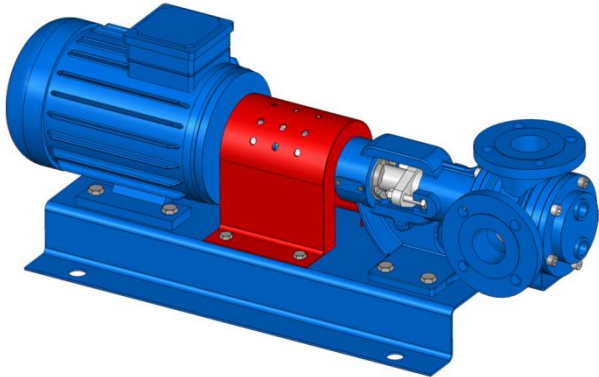
YK1½" - YKF1½" - YKYF 1½"

AKUPLAJ ÖLÇÜLERİ / COUPLING DIMENSIONS

MOTOR AKUPELİ / MOTOR DRIVE



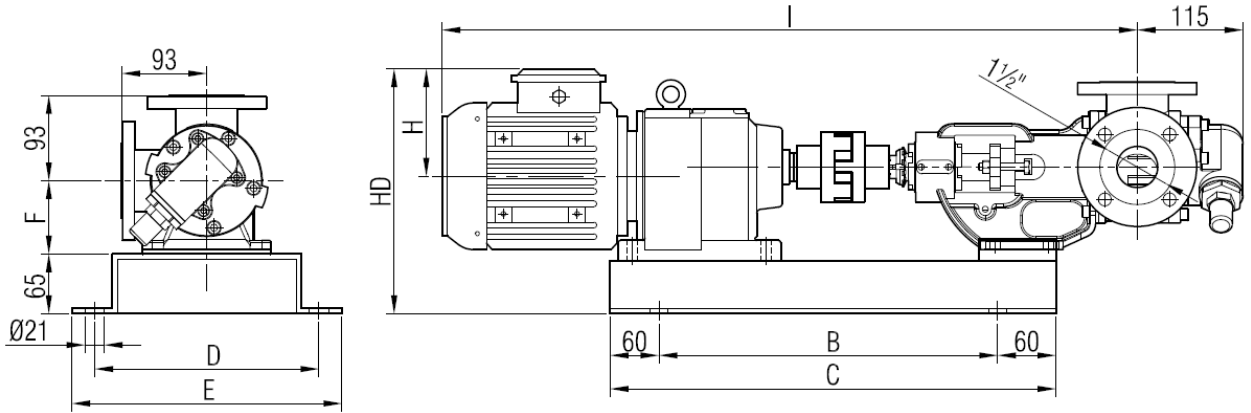
MOTOR GÜÇ VE DEVİRLERİ / MOTOR POWER AND SPEED			I	HD	H	B	C	D	E	F	G	kg.	
1 hp	/ 0,75 kw	900 d/d (rpm)	MOTOR 90S	645	281	90	380	500	260	300	90	60	42
1,5 hp	/ 1,1 kw	1400 d/d (rpm)											
1,5 hp	/ 1,1 kw	900 d/d (rpm)	MOTOR 90L	700	281	90	380	500	260	300	90	60	45
2 hp	/ 1,5 kw	1400 d/d (rpm)											
1,5 hp	/ 1,1 kw	750 d/d (rpm)	MOTOR 100L	746	300	100	430	550	260	300	100	60	53
2 hp	/ 1,5 kw	900 d/d (rpm)											
3 hp	/ 2,2 kw	1400 d/d (rpm)											
4 hp	/ 3 kw	1400 d/d (rpm)	MOTOR 112M	760	323	112	420	620	310	350	112	100	65
2 hp	/ 1,5 kw	750 d/d (rpm)											
3 hp	/ 2,2 kw	900 d/d (rpm)											
5,5 hp	/ 4 kw	1400 d/d (rpm)											



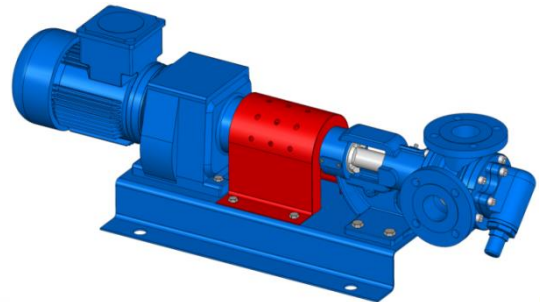
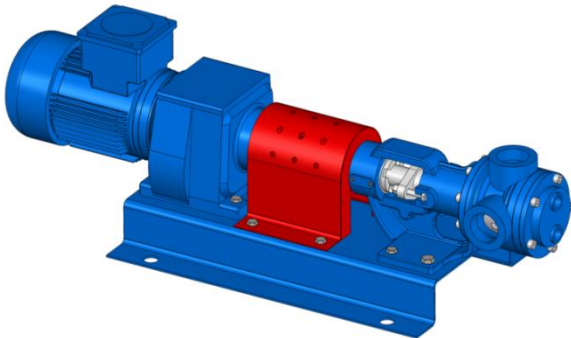
YK1½" - YKF1½" - YKYF 1½"

AKUPLAJ ÖLÇÜLERİ / COUPLING DIMENSIONS

REDÜKTÖR AKUPLİ / GEARBOX DRIVE

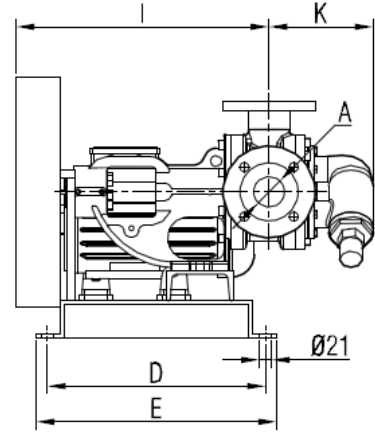
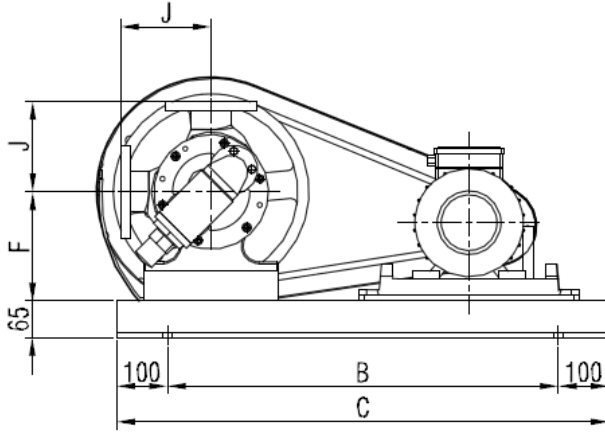


MOTOR GÜÇ VE DEVİRLERİ / MOTOR POWER AND SPEED		I	HD	H	B	C	D	E	F	kg.	
1 hp / 0,75 kw	90/400 d/d (rpm)	İRAM42/80M	760	269	118	350	470	260	300	90	52
1 hp / 0,75 kw	40/240 d/d (rpm)	İRAM53/80M	788	269	118	380	500	260	300	90	53
1,5 hp / 1,1 kw	200/400 d/d (rpm)	İRAM42/90S	780	283	132	350	470	260	300	90	55
1,5 hp / 1,1 kw	60/382 d/d (rpm)	İRAM53/90S	806	282	132	380	500	260	300	90	56
2 hp / 1,5 kw	87/540 d/d (rpm)	İRAM52/90L	832	282	132	380	500	260	300	90	58
3-4 hp / 2,2-3 kw	300/540 d/d (rpm)	İRAM52/100L	860	291	141	380	500	260	300	90	62
5,5 hp / 4 kw	87/540 d/d (rpm)	İRAM62/112M	955	318	149	430	550	260	300	115	79



YK1½" - YKF1½" - YKYF 1½"

KAYIŞ KASNAK AKUPLELİ POMPA ÖLÇÜLERİ / BELT PULLEY COUPLING PUMP DIMENSIONS

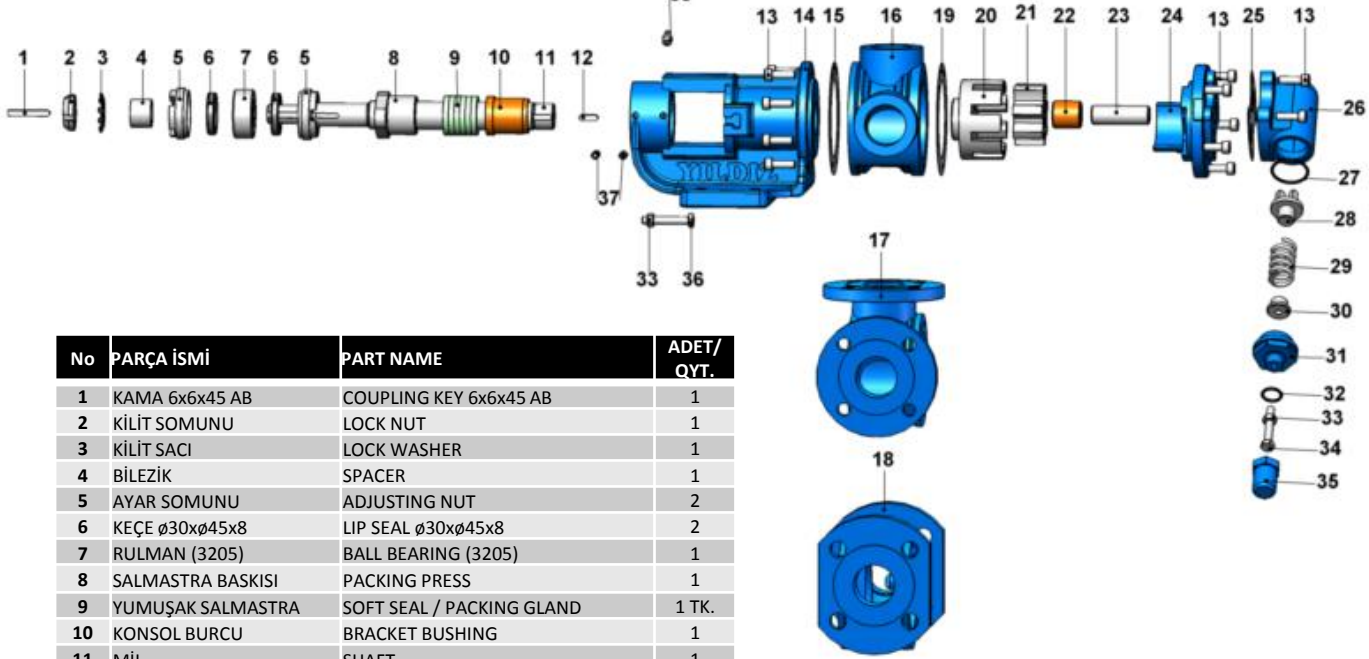


MOTOR GÜÇ VE DEVİRLERİ / MOTOR POWER AND SPEED			Pompa Devirleri / Pump speeds				F(1)	F(2)	F(3)	F(4)	A	B	C	D	E	I	J	K	kg.
			n1 d/d	n2 d/d	n3 d/d	n4 d/d													
YKF1½" (PN6)	3 hp / 2,2 kw	MOTOR 100L	450	400	350	310	150	190	200	200	DN 40	680	880	390	430	360	93	116	90
	4 hp / 3 kw	MOTOR 100L																	95
	5,5 hp / 4 kw	MOTOR 112M																	105
	7,5 hp / 5,5 kw	MOTOR 132S																	115
	10 hp / 7,5 kw	MOTOR 132M																	125

YK1½" - YKF1½" - YKYF 1½"

YEDEK PARÇA LİSTESİ / SPARE PARTS LIST

YUMUŞAK SALMASTRALI VE BYPASSLI / SEALED WITH SOFT SEAL AND BYPASSED WITH PRESSURE RELIEF VALVE

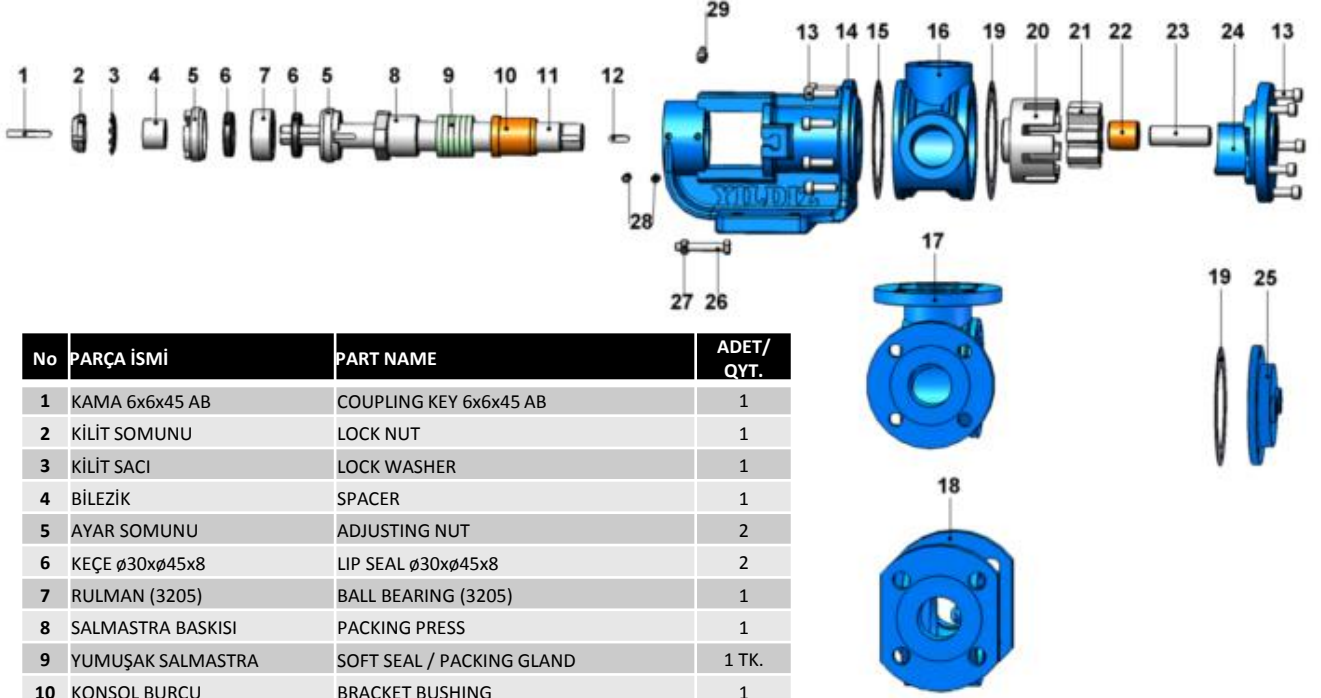


No	PARÇA İSMİ	PART NAME	ADET/ QYT.
1	KAMA 6x6x45 AB	COUPLING KEY 6x6x45 AB	1
2	KİLİT SOMUNU	LOCK NUT	1
3	KİLİT SACI	LOCK WASHER	1
4	BİLEZİK	SPACER	1
5	AYAR SOMUNU	ADJUSTING NUT	2
6	KEÇE ø30xø45x8	LIP SEAL ø30xø45x8	2
7	RULMAN (3205)	BALL BEARING (3205)	1
8	SALMASTRA BASKISI	PACKING PRESS	1
9	YUMUŞAK SALMASTRA	SOFT SEAL / PACKING GLAND	1 TK.
10	KONSOL BURCU	BRACKET BUSHING	1
11	MİL	SHAFT	1
12	KAMA 6x6x20 A	ROTOR GEAR 6x6x20 A	1
13	İMBUS CİVATA M8x25	INBUS BOLT M8x25	17
14	KONSOL	BRACKET	1
15	KONSOL CONTASI	BRACKET GASKET	1
16	ARA GÖVDE (BORU DIŞLI 90°)	CASING (w/ 90° THREADED PORTS)	1
17	ARA GÖVDE (FLANŞLI 90°)	CASING (w/ 90° FLANGED PORTS)	1
18	ARA GÖVDE (FLANŞLI 180°)	CASING (w/ 180° FLANGED PORTS)	1
19	KAPAK CONTASI	COVER GASKET	1
20	ÇEVRE DİŞLİ	ROTOR GEAR	1
21	AVARA DİŞLİ	IDLER GEAR	1
22	AVARA DİŞLİ BURCU	IDLER BUSHING	1
23	KAPAK MİLİ	COVER PIN	1
24	KAPAK (BYPASSLI)	COVER (w/ BYPASS INLETS)	1
25	BYPASS CONTASI	BYPASS GASKET	1
26	BYPASS	PRESSURE RELIEF VALVE – BYPASS	1
27	BYPASS O-RING	BYPASS O-RING	1
28	KLEPE	VALVE	1
29	YAY	SPRING	1
30	PUL	WASHER	1
31	BYPASS KAPAĞI	BYPASS COVER	1
32	TİJ KAPAK O-RİNG	CAP O-RING	1
33	M8 SOMUN	NUT M8	3
34	6 KÖŞE CİVATA M8x55	ADJUSTING SCREW M8x55	1
35	TİJ KAPAĞI	CAP	1
36	6 KÖŞE CİVATA M8x50	HEX BOLT M8x50	2
37	SETUSKUR M8x16	GRUB SCREW M8x16	4
38	GRESÖR R3/8"	GREASING FITTING R3/8"	1

YK1½" - YKF1½" - YKYF 1½"

YEDEK PARÇA LİSTESİ / SPARE PARTS LIST

YUMUŞAK SALMASTRALI, CEKETLİ VE KÖR KAPAKLI / SEALED WITH SOFT SEAL, JACKETED, AND WITH BLIND COVER

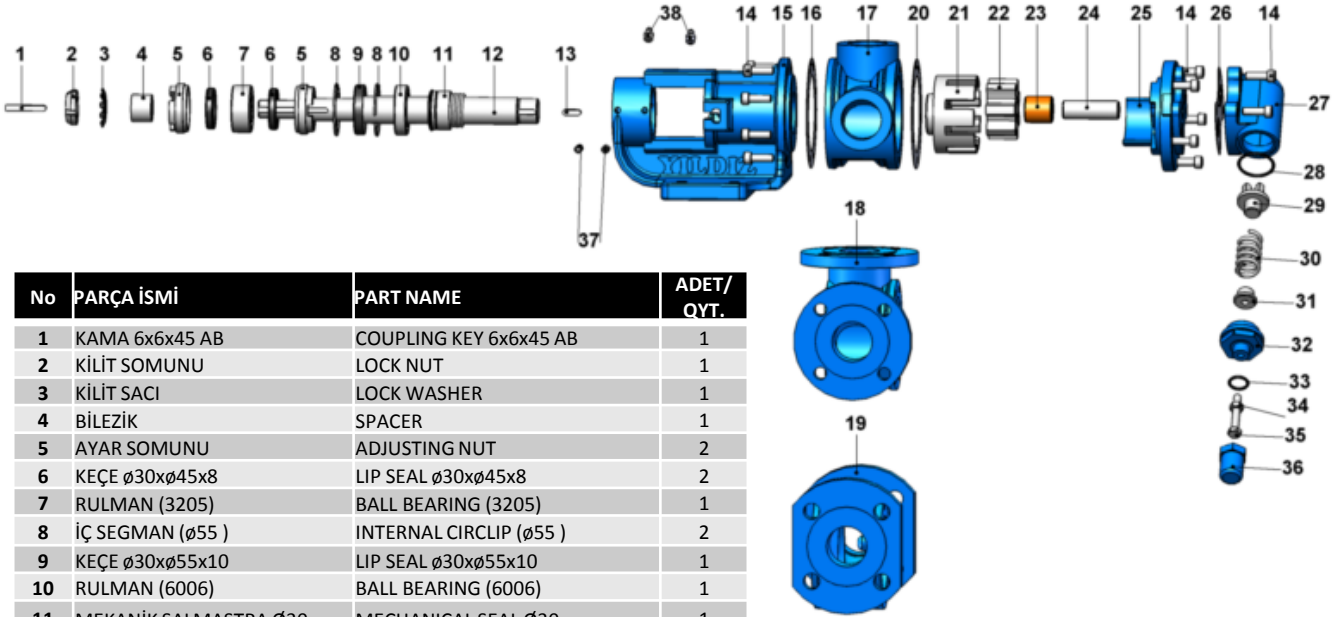


No	PARÇA İSMİ	PART NAME	ADET/ QYT.
1	KAMA 6x6x45 AB	COUPLING KEY 6x6x45 AB	1
2	KİLİT SOMUNU	LOCK NUT	1
3	KİLİT SACI	LOCK WASHER	1
4	BİLEZİK	SPACER	1
5	AYAR SOMUNU	ADJUSTING NUT	2
6	KEÇE Ø30xØ45x8	LIP SEAL Ø30xØ45x8	2
7	RULMAN (3205)	BALL BEARING (3205)	1
8	SALMASTRA BASKISI	PACKING PRESS	1
9	YUMUŞAK SALMASTRA	SOFT SEAL / PACKING GLAND	1 TK.
10	KONSOL BURCU	BRACKET BUSHING	1
11	MİL	SHAFT	1
12	KAMA 6x6x20 A	ROTOR KEY 6x6x20 A	1
13	IMBUS CİVATA M8x25	INBUS BOLT M8x25	13
13	IMBUS CİVATA M8x30 (CEKETLİ KAPAK İÇİN)	HEX SOCKET M8x30 FOR COVER w/ HEATING JACKET	5
14	KONSOL	BRACKET	1
15	KONSOL CONTASI	BRACKET GASKET	1
16	ARA GÖVDE (BORU DİŞLİ 90°)	CASING (w/ 90° THREADED PORTS)	1
17	ARA GÖVDE (FLANŞLI 90°)	CASING (w/ 90° FLANGED PORTS)	1
18	ARA GÖVDE (FLANŞLI 180°)	CASING (w/ 180° FLANGED PORTS)	1
19	KAPAK CONTASI	COVER GASKET	2
20	ÇEVRE DİŞLİ	ROTOR GEAR	1
21	AVARA DİŞLİ	IDLER GEAR	1
22	AVARA DİŞLİ BURCU	IDLER BUSHING	1
23	KAPAK MİLİ	COVER PIN	1
24	KAPAK (KÖR)	BLIND COVER	1
25	KAPAK (CEKETLİ)	COVER (w/ HEATING JACKETS)	1
26	6 KÖŞE CİVATA M8x50	HEX BOLT M8x50	2
27	M8 SOMUN	NUT M8	2
28	SETUSKUR M8x16	GRUB SCREW M8x16	4
29	GRESÖR R3/8"	GREASING FITTING R3/8"	1

YK1½" - YKF1½" - YKYF 1½"

YEDEK PARÇA LİSTESİ / SPARE PARTS LIST

MEKANİK SALMASTRALI VE BYPASSLI / SEALED WITH MECHANICAL SEAL,
AND BYPASSED WITH PRESSURE RELIEF VALVE

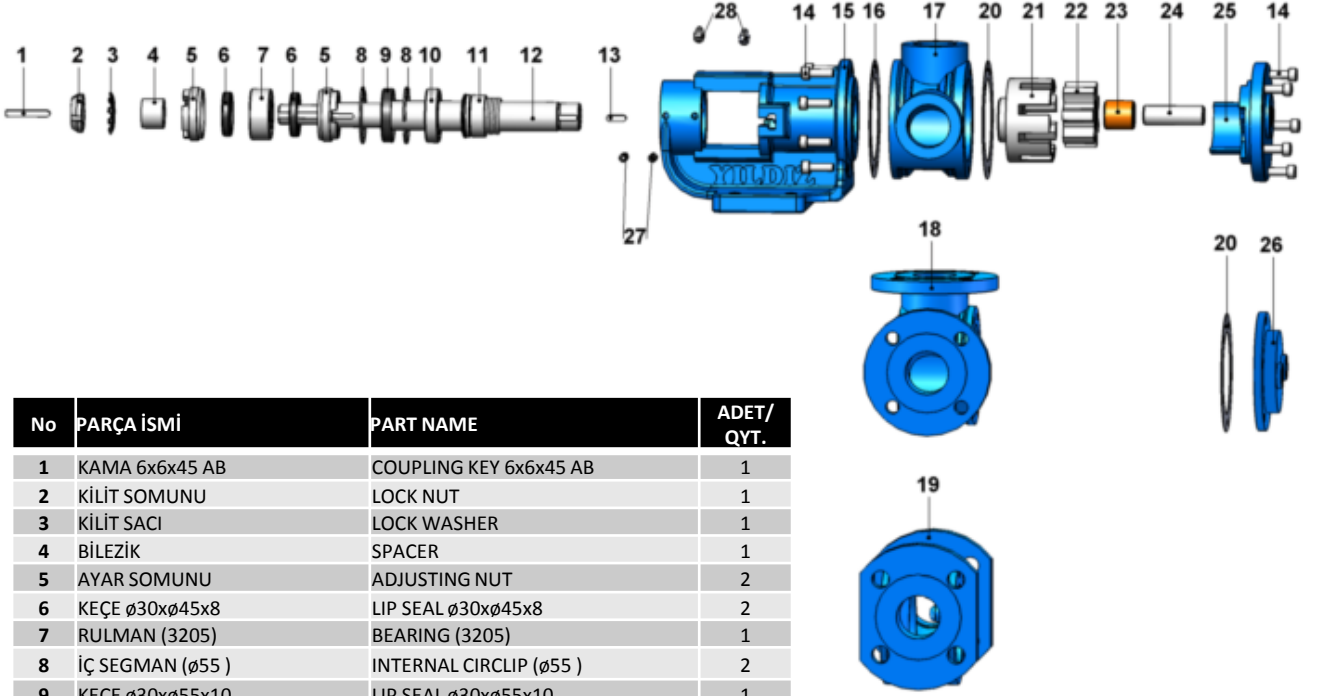


No	PARÇA İSMİ	PART NAME	ADET/ QYT.
1	KAMA 6x6x45 AB	COUPLING KEY 6x6x45 AB	1
2	KİLİT SOMUNU	LOCK NUT	1
3	KİLİT SACI	LOCK WASHER	1
4	BİLEZİK	SPACER	1
5	AYAR SOMUNU	ADJUSTING NUT	2
6	KEÇE ø30xø45x8	LIP SEAL ø30xø45x8	2
7	RULMAN (3205)	BALL BEARING (3205)	1
8	İÇ SEGMAN (ø55)	INTERNAL CIRCLIP (ø55)	2
9	KEÇE ø30xø55x10	LIP SEAL ø30xø55x10	1
10	RULMAN (6006)	BALL BEARING (6006)	1
11	MEKANİK SALMASTRA ø30	MECHANICAL SEAL ø30	1
12	MİL	SHAFT	1
13	KAMA 6x6x20 A	ROTOR KEY 6x6x20 A	1
14	IMBUS CİVATA M8x25	INBUS BOLT M8x25	17
15	KONSOL	BRACKET	1
16	KONSOL CONTASI	BRACKET GASKET	1
17	ARA GÖVDE (BORU DİŞLİ 90°)	CASING (w/ 90° THREADED PORTS)	1
18	ARA GÖVDE (FLANŞLI 90°)	CASING (w/ 90° FLANGED PORTS)	1
19	ARA GÖVDE (FLANŞLI 180°)	CASING (w/ 180° FLANGED PORTS)	1
20	KAPAK CONTASI	COVER GASKET	1
21	ÇEVRE DİŞLİ	ROTOR GEAR	1
22	AVARA DİŞLİ	IDLER GEAR	1
23	AVARA DİŞLİ BURCU	IDLER BUSHING	1
24	KAPAK MİLİ	COVER PIN	1
25	KAPAK (BYPASSLI)	COVER (w/ BYPASS INLETS)	1
26	BYPASS CONTASI	BYPASS GASKET	1
27	BYPASS	PRESSURE RELIEF VALVE – BYPASS	1
28	BYPASS O-RING	BYPASS O-RING	1
29	KLEPE	VALVE	1
30	YAY	SPRING	1
31	PUL	WASHER	1
32	BYPASS KAPAĞI	BYPASS COVER	1
33	TİJ KAPAK O-RİNG	CAP O-RING	1
34	M8 SOMUN	NUT M8	1
35	6 KÖŞE CİVATA M8x55	ADJUSTING SCREW M8x55	1
36	TİJ KAPAĞI	CAP	1
37	SETUSKUR M8x16	GRUB SCREW M8x16	4
38	GRESÖR R3/8"	GREASING FITTING R3/8"	2

YK1½" - YKF1½" - YKYF 1½"

YEDEK PARÇA LİSTESİ / SPARE PARTS LIST

MEKANİK SALMASTRALI, CEKETLİ VE KÖR KAPAKLI / SEALED WITH MECHANICAL SEAL, JACKETED, AND WITH BLIND COVER

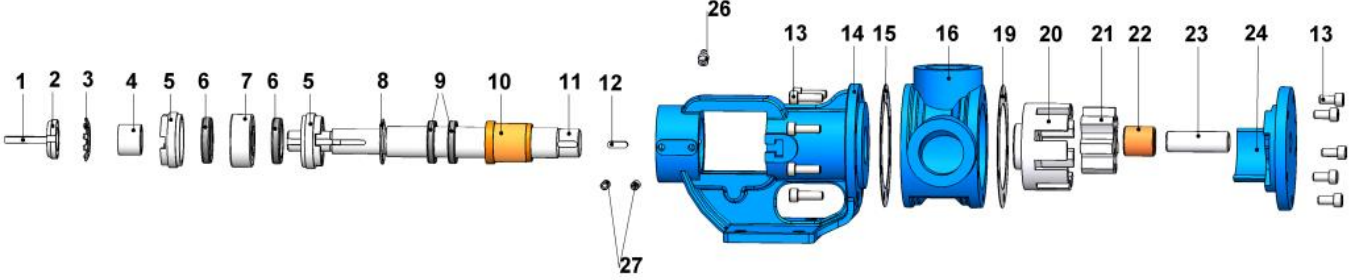


No	PARÇA İSMİ	PART NAME	ADET/ QYT.
1	KAMA 6x6x45 AB	COUPLING KEY 6x6x45 AB	1
2	KİLİT SOMUNU	LOCK NUT	1
3	KİLİT SACI	LOCK WASHER	1
4	BİLEZİK	SPACER	1
5	AYAR SOMUNU	ADJUSTING NUT	2
6	KEÇE ø30xø45x8	LIP SEAL ø30xø45x8	2
7	RULMAN (3205)	BEARING (3205)	1
8	İÇ SEGMAN (ø55)	INTERNAL CIRCLIP (ø55)	2
9	KEÇE ø30xø55x10	LIP SEAL ø30xø55x10	1
10	RULMAN (6006)	BALL BEARING (6006)	1
11	MEKANİK SALMASTRA ø30	MECHANICAL SEAL ø30	1
12	MİL	SHAFT	1
13	KAMA 6x6x20 A	ROTOR KEY 6x6x20 A	1
14	IMBUS CİVATA M8x25	INBUS BOLT M8x25	13
14	IMBUS CİVATA M8x30 (CEKETLİ KAPAK İÇİN)	INBUS BOLT M8x30 FOR COVER w/ HEATING JACKET	5
15	KONSOL	BRACKET	1
16	KONSOL CONTASI	BRACKET GASKET	1
17	ARA GÖVDE (BORU DIŞLI 90°)	CASING (w/ 90° THREADED PORTS)	1
18	ARA GÖVDE (FLANŞLI 90°)	CASING (w/ 90° FLANGED PORTS)	1
19	ARA GÖVDE (FLANŞLI 180°)	CASING (w/ 180° FALNGED PORTS)	1
20	KAPAK CONTASI	COVER GASKET	2
21	ÇEVRE DİŞLİ	ROTOR GEAR	1
22	AVARA DİŞLİ	IDLER GEAR	1
23	AVARA DİŞLİ BURCU	IDLER BUSHING	1
24	KAPAK MİLİ	COVER PIN	1
25	KAPAK (KÖR)	BLIND COVER	1
26	KAPAK (CEKETLİ)	COVER (w/ HEATING JACKET)	1
27	SETUSKUR M8x16	GRUB SCREW M8x16	4
28	GRESÖR R3/8"	GREASING FITTING R3/8"	2

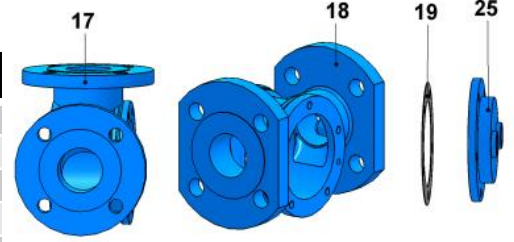
YK1½" - YKF1½" - YKYF 1½"

YEDEK PARÇA LİSTESİ / SPARE PARTS LIST

KEÇELİ, CEKETLİ VE KÖR KAPAKLI / SEALED WITH LIP SEAL, JACKETED AND WITH BLIND COVER



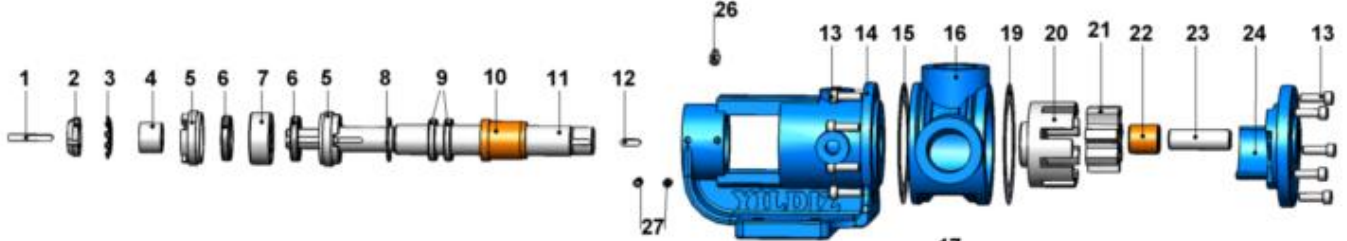
No	PARÇA İSMİ	PART NAME	ADET/ QYT.
1	KAMA 6x6x45 AB	CCOUPLING KEY 6x6x45 AB	1
2	KİLİT SOMUNU	LOCK NUT	1
3	KİLİT SACI	LOCK WASHER	1
4	BİLEZİK	SPACER	1
5	AYAR SOMUNU	ADJUSTING NUT	2
6	KEÇE ø30xø45x8	LIP SEAL ø30xø45x8	2
7	RULMAN (3205)	BALL BEARING (3205)	1
8	İÇ SEGMAN (ø42)	INTERNAL CIRCLIP (ø42)	1
9	KEÇE ø30xø42x7	LIP SEAL ø30xø42x7	2
10	KONSOL BURCU	BRACKET BUSHING	1
11	MİL	SHAFT	1
12	KAMA 6x6x20 A	ROTOR KEY 6x6x20 A	1
13	IMBUS CİVATA M8x25	INBUS BOLT M8x25	13
13	IMBUS CİVATA M8x30 (CEKETLİ KAPAK İÇİN)	INBUS BOLT M8x30 FOR COVER w/ HEATING JACKET	5
14	KONSOL	BRACKET	1
15	KONSOL CONTASI	BRACKET GASKET	1
16	ARA GÖVDE (BORU DİŞLİ 90°)	CASING (w/ 90° THREADED PORTS)	1
17	ARA GÖVDE (FLANŞLI 90°)	CASING (w/ 90° FLANGED PORTS)	1
18	ARA GÖVDE (FLANŞLI 180°)	CASING (w/ 180° FLANGED)	1
19	KAPAK CONTASI	COVER GASKET	2
20	ÇEVRE DİŞLİ	ROTOR GEAR	1
21	AVARA DİŞLİ	IDLER GEAR	1
22	AVARA DİŞLİ BURCU	IDLER BUSHING	1
23	KAPAK MİLİ	COVER PIN	1
24	KAPAK (KÖR)	BLIND COVER	1
25	KAPAK (CEKETLİ)	COVER (w/ HEATING JACKET)	1
26	GRESÖR R3/8"	GREASING FITTING R3/8"	1
27	SETUSKUR M8x16	GRUB SCREW M8x16	4



YK1½" - YKF1½" - YKYF 1½"

YEDEK PARÇA LİSTESİ / SPARE PARTS LIST

KEÇELİ, ÇİFT CİDARLI / DOUBLE JACKETED AND SEALED WITH LIP SEAL



No	PARÇA İSMİ	PART NAME	ADET/ QYT.
1	KAMA 6x6x45 AB	CCOUPLING KEY 6x6x45 AB	1
2	KİLİT SOMUNU	LOCK NUT	1
3	KİLİT SACI	LOCK WASHER	1
4	BİLEZİK	SPACER	1
5	AYAR SOMUNU	ADJUSTING NUT	2
6	KEÇE ø30xø45x8	LIP SEAL ø30xø45x8	2
7	RULMAN (3205)	BALL BEARING (3205)	1
8	İÇ SEGMAN (ø42)	INTERNAL CIRCLIP (ø42)	1
9	KEÇE ø30xø42x7	LIP SEAL ø30xø42x7	2
10	KONSOL BURCU	BRACKET BUSHING	1
11	MİL	SHAFT	1
12	KAMA 6x6x20 A	ROTOR KEY 6x6x20 A	1
13	IMBUS CİVATA M8x25	INBUS BOLT M8x25	13
13	IMBUS CİVATA M8x30 (CEKETLİ KAPAK İÇİN)	INBUS BOLT M8x30 FOR COVER w/ HEATING JACKET	5
14	CEKETLİ KONSOL	BRACKET JACKETED	1
15	KONSOL CONTASI	BRACKET GASKET	1
16	ARA GÖVDE (BORU DİŞLİ 90°)	CASING (w/ 90° THREADED PORTS)	1
17	ARA GÖVDE (FLANŞLI 90°)	CASING (w/ 90° FLANGED PORTS)	1
18	ARA GÖVDE (FLANŞLI 180°)	CASING (w/ 180° FLANGED)	1
19	KAPAK CONTASI	COVER GASKET	2
20	ÇEVRE DİŞLİ	ROTOR GEAR	1
21	AVARA DİŞLİ	IDLER GEAR	1
22	AVARA DİŞLİ BURCU	IDLER BUSHING	1
23	KAPAK MİLİ	COVER PIN	1
24	KAPAK (KÖR)	BLIND COVER	1
25	KAPAK (CEKETLİ)	COVER (w/ HEATING JACKET)	1
26	GRESÖR R3/8"	GREASING FITTING R3/8"	1
27	SETUSKUR M8x16	GRUB SCREW M8x16	4

