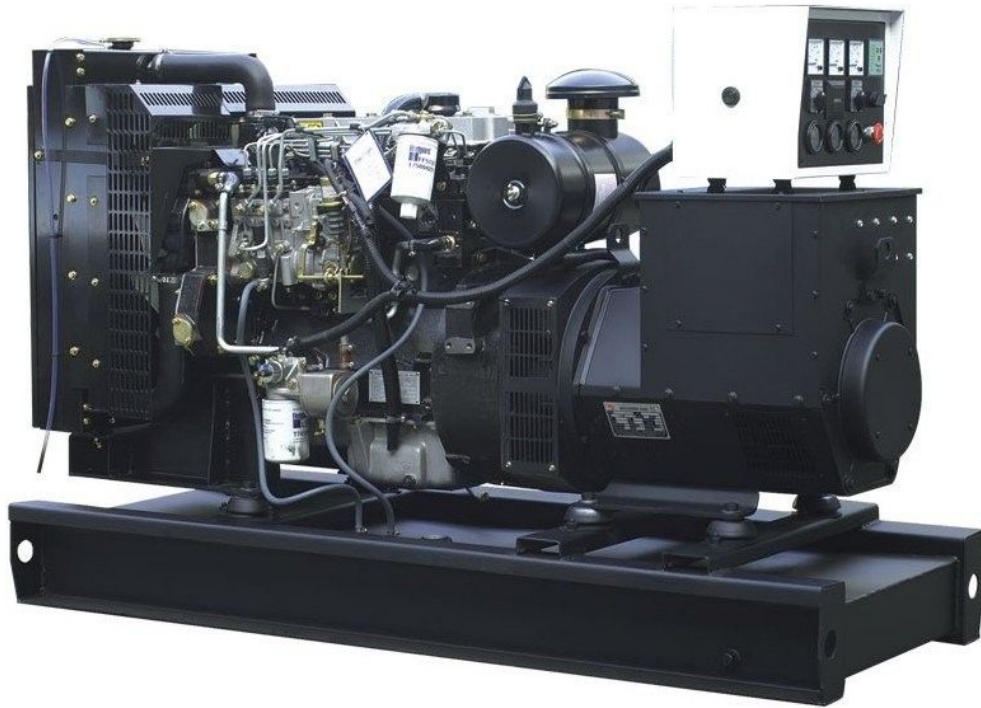


Stamford : ژنراتور

LOVOL-china : موتور دیزل

Standby		Prime		دیزل ژنراتور
KVA	KW	KVA	KW	
154	123	140	112	



موتور دیزل		
Manufacturer	LOVOL-china	تولید کننده
Type	1006TGZA14	تیپ
Speed rpm	1500	سرعت
Number of cylinders	6	تعداد سیلندر ها
Compression ratio	17.5:1	ضریب تراکم
Cylinder arrangement	in-line	آرایش سیلندر ها
Displacement , Liters	5.99 liters	جا به جایی
Bore × Stroke , mm	100mm×127mm	قطر سیلندر × کورس پیستون
Combustion System	direct injection	سیستم احتراق
Aspiration	Turbo, A-A, inter cool	سیستم تنفس
Rotation	Counter-clockwise	چرخش
Governing type	Mechanical	نوع گاورنر
Configuration	water-cooled	پیکر بندی
Max. ambient temperature	50 ° C	ماکزیمم دمای محیط
Dimensions mm	1600×800×1050	ابعاد

ژنراتور		
Manufacturer	Stamford	تولید کننده
Type	UCI274E	تیپ
Efficiency, %	91.7%	راندمان
Standby power at rated voltage, KVA	125	توان standby در ولتاژ نامی
Power factor	0.8	ضریب قدرت
Phase	3	فاز
Frequency, Hz	50	فرکانس
Voltage, V	380~440	ولتاژ
Stator windings	Double Layer Concentric	سیم پیچ استاتور
Voltage Regulation, %	$-0.5 < x < +0.5$	تنظیم ولتاژ
Rotor WDG. Resistance	1.34 اهم	مقاومت سیم پیچ روتور
Short circuit ratio	1/Xd	نسبت اتصال کوتاه
Insulation class	H	کلاس عایق
Protection class	IP23	کلاس حفاظتی

UCI274E WINDING 311

CONTROL SYSTEM		SEPARATELY EXCITED BY P.M.G.							
A.V.R.	MX321	MX341							
VOLTAGE REGULATION	± 0.5 %	± 1.0 %	With 4% ENGINE GOVERNING						
SUSTAINED SHORT CIRCUIT		REFER TO SHORT CIRCUIT DECREMENT CURVES (page 7)							
CONTROL SYSTEM		SELF EXCITED							
A.V.R.	SX460	SX440	SX421						
VOLTAGE REGULATION	± 1.5 %	± 1.0 %	± 0.5 %	With 4% ENGINE GOVERNING					
SUSTAINED SHORT CIRCUIT		SERIES 4 CONTROL DOES NOT SUSTAIN A SHORT CIRCUIT CURRENT							
INSULATION SYSTEM		CLASS H							
PROTECTION		IP23							
RATED POWER FACTOR		0.8							
STATOR WINDING		DOUBLE LAYER CONCENTRIC							
WINDING PITCH		TWO THIRDS							
WINDING LEADS		12							
STATOR WDG. RESISTANCE		0.0317 Ohms PER PHASE AT 22°C SERIES STAR CONNECTED							
ROTOR WDG. RESISTANCE		1.34 Ohms at 22°C							
R.F.I. SUPPRESSION		BS EN 61000-6-2 & BS EN 61000-6-4, VDE 0875G, VDE 0875N. refer to factory for others							
WAVEFORM DISTORTION		NO LOAD < 1.5% NON-DISTORTING BALANCED LINEAR LOAD < 5.0%							
MAXIMUM OVERSPEED		2250 Rev/Min							
BEARING DRIVE END		BALL. 6315-2RS (ISO)							
BEARING NON-DRIVE END		BALL. 6310-2RS (ISO)							
		1 BEARING			2 BEARING				
WEIGHT COMP. GENERATOR		492 kg			511 kg				
WEIGHT WOUND STATOR		180 kg			180 kg				
WEIGHT WOUND ROTOR		167.51 kg			156.55 kg				
WR ² INERTIA		1.3271 kgm ²			1.2765 kgm ²				
SHIPPING WEIGHTS in a crate		525 kg			539 kg				
PACKING CRATE SIZE		105 x 67 x 103(cm)			123 x 67 x 103(cm)				
		50 Hz			60 Hz				
TELEPHONE INTERFERENCE		THF<2%			TIF<50				
COOLING AIR		0.514 m ³ /sec 1090 cfm			0.617 m ³ /sec 1308 cfm				
VOLTAGE SERIES STAR	380/220	400/231	415/240	440/254	416/240	440/254	460/266	480/277	
VOLTAGE PARALLEL STAR	190/110	200/115	208/120	220/127	208/120	220/127	230/133	240/138	
VOLTAGE SERIES DELTA	220/110	230/115	240/120	254/127	240/120	254/127	266/133	277/138	
KVA BASE RATING FOR REACTANCE VALUES		140	140	140	n/a	160	167.5	167.5	178.8
X _d DIR. AXIS SYNCHRONOUS	2.34	2.11	1.96	-	2.68	2.51	2.29	2.25	
X' _d DIR. AXIS TRANSIENT	0.21	0.19	0.18	-	0.25	0.23	0.21	0.21	
X'' _d DIR. AXIS SUBTRANSIENT	0.14	0.13	0.12	-	0.17	0.16	0.15	0.14	
X _q QUAD. AXIS REACTANCE	1.53	1.38	1.28	-	1.74	1.63	1.49	1.46	
X'' _q QUAD. AXIS SUBTRANSIENT	0.18	0.16	0.15	-	0.22	0.21	0.19	0.18	
X _L LEAKAGE REACTANCE	0.08	0.08	0.07	-	0.09	0.08	0.08	0.08	
X ₂ NEGATIVE SEQUENCE	0.16	0.14	0.13	-	0.19	0.18	0.16	0.16	
X ₀ ZERO SEQUENCE	0.10	0.09	0.08	-	0.11	0.10	0.09	0.09	
REACTANCES ARE SATURATED		VALUES ARE PER UNIT AT RATING AND VOLTAGE INDICATED							
T' _d TRANSIENT TIME CONST.		0.032 s							
T'' _d SUB-TRANSTIME CONST.		0.01 s							
T' _{do} O.C. FIELD TIME CONST.		0.85 s							
T _a ARMATURE TIME CONST.		0.007 s							
SHORT CIRCUIT RATIO		1/X _d							

UCI274E

Winding 311 / 0.8 Power Factor

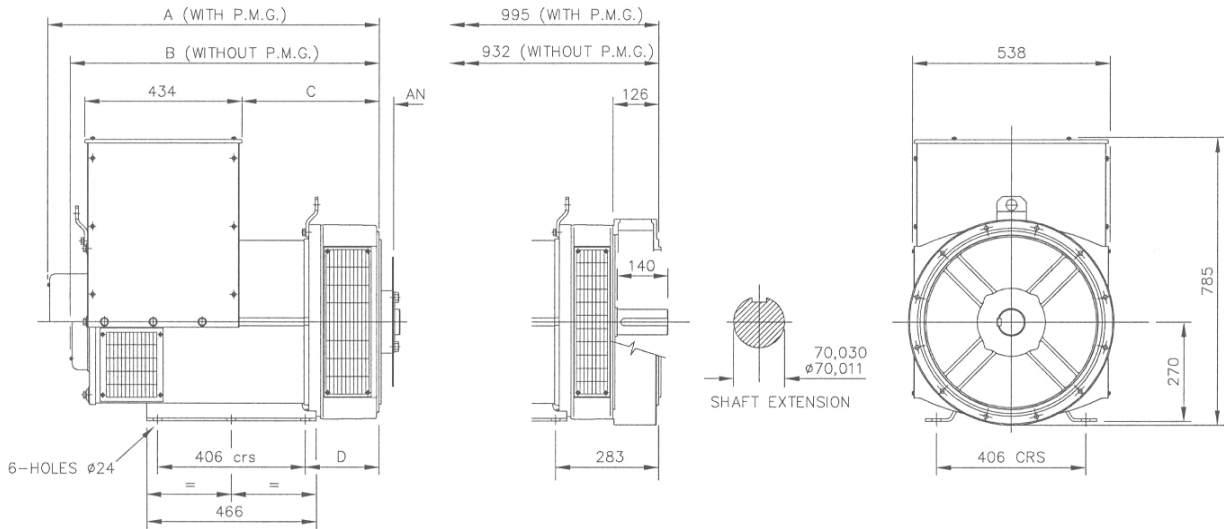


RATINGS

Class - Temp Rise		Cont. F - 105/40°C				Cont. H - 125/40°C				Standby - 150/40°C				Standby - 163/27°C			
50 Hz	Series Star (V)	380	400	415	440	380	400	415	440	380	400	415	440	380	400	415	440
	Parallel Star (V)	190	200	208	220	190	200	208	220	190	200	208	220	190	200	208	220
	Series Delta (V)	220	230	240	254	220	230	240	254	220	230	240	254	220	230	240	254
	kVA	125.0	125.0	125.0	n/a	140.0	140.0	140.0	n/a	145.0	145.0	145.0	n/a	150.0	150.0	150.0	n/a
	kW	100.0	100.0	100.0	n/a	112.0	112.0	112.0	n/a	116.0	116.0	116.0	n/a	120.0	120.0	120.0	n/a
	Efficiency (%)	91.7	92.1	92.3	n/a	91.3	91.7	92.0	n/a	91.1	91.6	91.8	n/a	91.0	91.4	91.7	n/a
	kW Input	109.1	108.6	108.3	n/a	122.7	122.1	121.7	n/a	127.3	126.6	126.4	n/a	131.9	131.3	130.9	n/a

60 Hz	Series Star (V)	416	440	460	480	416	440	460	480	416	440	460	480	416	440	460	480
	Parallel Star (V)	208	220	230	240	208	220	230	240	208	220	230	240	208	220	230	240
	Series Delta (V)	240	254	266	277	240	254	266	277	240	254	266	277	240	254	266	277
	kVA	140.0	143.8	143.8	160.0	160.0	167.5	167.5	178.8	170.0	175.0	175.0	187.5	175.0	181.3	181.3	193.8
	kW	112.0	115.0	115.0	128.0	128.0	134.0	134.0	143.0	136.0	140.0	140.0	150.0	140.0	145.0	145.0	155.0
	Efficiency (%)	91.9	92.2	92.5	92.5	91.4	91.7	92.1	92.1	91.2	91.5	91.9	92.0	91.0	91.4	91.8	91.9
	kW Input	121.9	124.8	124.4	138.4	140.0	146.1	145.5	155.3	149.1	153.0	152.3	163.0	153.8	158.7	158.0	168.7

DIMENSIONS



SINGLE BEARING ADAPTORS				
ADAPTOR	A	B	C	D
SAE 1	928,3	865,3	389,3	216,3
SAE 2	914	851	375	202
SAE 3	914	851	375	202

COUPLING DISCS	
DISC	AN
SAE 10	53,98
SAE 11,5	39,68
SAE 14	25,40



PO Box 17 • Barnack Road • Stamford • Lincolnshire • PE9 2NB

Tel: 00 44 (0)1780 484000 • Fax: 00 44 (0)1780 484100

Website: www.newage-avkseg.com