

ﺋﻨﺮﺍﺗﻮﺭ : Stamford Power

ﻣﻮﺗﻮﺭ ﺩﯨﺰﻝ : Detuz-china

Standby		Prime		ﺩﯨﺰﻝ ﺋﻨﺮﺍﺗﻮﺭ
KVA	KW	KVA	KW	
31.3	-	30	24	



موتور دیزل		
Manufacturer	Detuz-china	تولید کننده
Type	D226B-3D	تیپ
Number of cylinders	3	تعداد سیلندر ها
Cylinder arrangement	-	آرایش سیلندر ها
Displacement , Liters	3.12	جا به جایی
Bore × Stroke , mm	105 X 120	قطر سیلندر × کورس پیستون
Compression Ratio	15.5 : 1	نسبت تراکم
Aspiration	Turbocharged	سیستم تنفس
Gross engine power, kWb	-	قدرت نافالص موتور
Combustion air flow, L/sec	-	جریان هوای احتراق
Exhaust gas temp.(after turbo) , °C	-	دمای گاز خروجی از اگزوز
Mean Piston Speed , m/s	-	میانگین سرعت پیستون

ژنراتور

Manufacturer	Stamford Power	تولید کننده
Type	SLG184G	تیپ
Standby power at rated voltage ,KVA	31.3	توان standby در ولتاژ نامی
Power factor	0.8	ضریب قدرت
Phase	3	فاز
Insulation class	H	کلاس عایق

G-Drive Engine D226B-3D

General Specifications

Bore & Stroke	105x120 mm
Displacement	3.12 L
Cylinder Number	3
Compression Ratio	15.5:1
Fuel System	Mechanical Pump
Governor Method	Mechanic/Electronic
Aspiration	NA/T
Emission Standard	EU Stage II



Engine Speed (rpm)	Engine Output		Typical Generator Output kWe/kVA	Engine Speed (rpm)	Engine Output		Typical Generator Output kWe/kVA
	Prime(PRP) kW	Standby(ESP) kW			Prime(PRP) kW	Standby(ESP) kW	
1500	30	33	24/30	1800	36	40	30/37.5

Standard Equipment

Engine and block

- Cast iron gantry type structure block
- One-piece forged crankshaft
- Separate cast iron cylinder heads and wet liners
- Aluminium alloy pistons with gallery oil cooling

Cooling system

- Thermostatically-controlled system with belt driven coolant pump and pusher fan

Lubrication system

- Spin-on full-flow lub oil filter

Optional Equipment

- Shutoff solenoid
- 24V electric system
- Flame preheating cold start
- Tool kits
- Spare parts

Special design connector for oil heater and drawing off oil pump

Fuel system

- In-line AD fuel injection pump
- Duplex fine filter for better efficiency

Air intake and exhaust system

- High performance silencer as standard
- Stainless steel exhaust manifold shield for heat isolating

Electrical system

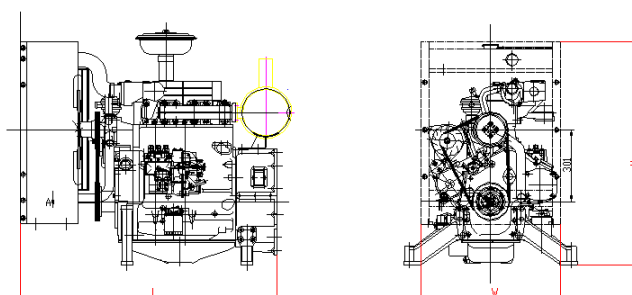
- 12V electric starter motors and battery charging alternator
- Standard sensor connector

Flywheel and housing

- SAE3 flywheel housing and 11.5" flywheel

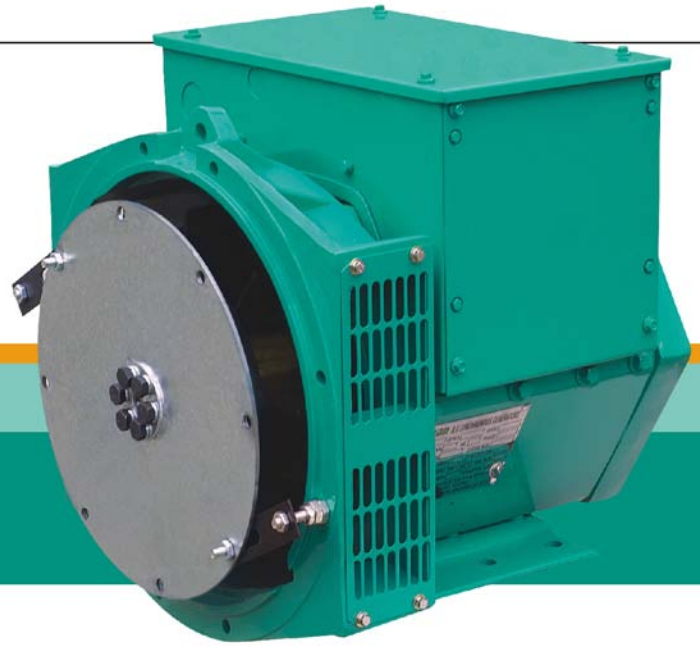
Dimensions and Weight

	NA	T
Length	1091 mm	1086 mm
Width	592 mm	592 mm
Height	941 mm	941 mm
Net Weight	400kg	430 kg



NEW ERA SLG

系列三相无刷同步发电机
SERIES THREE-PHASE BRUSHLESS
SYNCHRONOUS ALTERNATOR



SLG184 TECHNICAL DATA SHEET

50Hz CLASS "H"

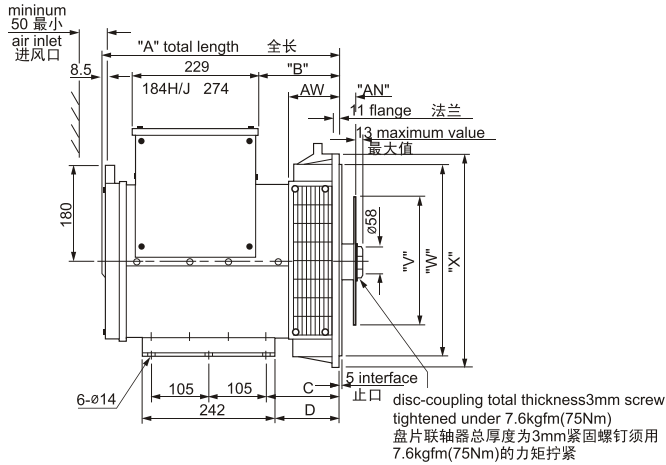
RATINGS	绕组形式 311 / 功率因数0.8 Winding 311 / 0.8 Power Factor												绕组形式05 Winding 05					
	持续/125k/40°C Cont./125K/40°C						持续/125k/40°C Cont./125K/40°C						持续/125k/40°C Cont./125K/40°C					
定额/温升/环温T° Duty / Temp Rise / Ambient T°	三相 3 PHASE						单相 1 PHASE						单相 1 PHASE					
相数 PHASE	三相 3 PHASE						单相 1 PHASE						单相 1 PHASE					
星形串联 SERIES STAR	380	400	415	440											Power Factor			
星形并联 PARALLEL STAR	190	200	208	220										0.8	1			
三角形串联 SERIES DELTA	220	230	240	254														
双三角形并联 DOUBLE DELTA									220	230	240			220,230,240				
	KVA	KW	KVA	KW	KVA	KW	KVA	KW	KVA	KW	KVA	KW	KVA	KW	KVA	KW	KVA	KW
SLG184E	22.5	18	22.5	18	22.5	18	17.5	14	13	10.4	13	10.4	13	10.4	15	12	16.6	16.6
SLG184F	27.5	22	27.5	22	27.5	22	22.5	18	16	12.8	16	12.8	16	12.8	18.5	14.8	20	20
SLG184G	31.3	25	31.3	25	31.3	25	27.5	22	18.1	14.5	18.1	14.5	18.1	14.5	21	16.8	22.8	22.8
SLG184H	37.5	30	37.5	30	37.5	30	32.5	26	21.7	17.4	21.7	17.4	21.7	17.4	25	20	27	27
SLG184J	40	32	40	32	40	32	35	28	23.2	18.6	24.7	19.8	23.2	18.6	28	22.4	30	30

60Hz CLASS "H"

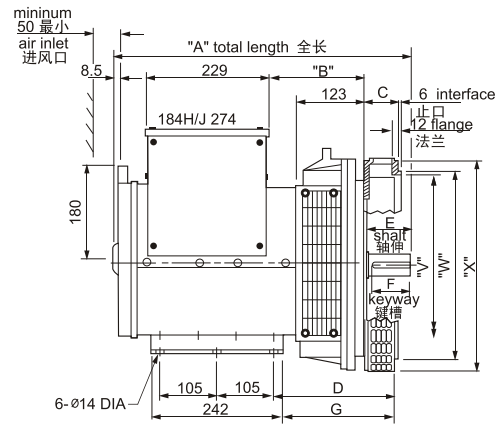
RATINGS	绕组形式 311 / 功率因数0.8 Winding 311 / 0.8 Power Factor												绕组形式05 Winding 05					
	持续/125k/40°C Cont./125K/40°C						持续/125k/40°C Cont./125K/40°C						持续/125k/40°C Cont./125K/40°C					
定额/温升/环温T° Duty / Temp Rise / Ambient T°	三相 3 PHASE						单相 1 PHASE						单相 1 PHASE					
相数 PHASE	三相 3 PHASE						单相 1 PHASE						单相 1 PHASE					
星形串联 SERIES STAR	416	440	460	480											Power Factor			
星形并联 PARALLEL STAR	208	220	230	240										0.8	1			
三角形串联 SERIES DELTA	240	254	266	277														
双三角形并联 DOUBLE DELTA									220	230	240			220,230,240				
	KVA	KW	KVA	KW	KVA	KW	KVA	KW	KVA	KW	KVA	KW	KVA	KW	KVA	KW	KVA	KW
SLG184E	27.5	22	28.8	23	28.8	23	30	24	14.6	11.7	15.3	12.2	16	12.8	18.4	14.7	21	21
SLG184F	32.5	26	34.4	27.5	34.4	27.5	35	28	17.2	13.8	18	14.4	18.8	15	21.9	17.5	25.6	25.6
SLG184G	35	28	37.5	30	37.5	30	37.5	30	18.7	15	19.5	15.6	20.3	16.2	25	20	30	30
SLG184H	44.3	35.4	46.9	37.5	46.9	37.5	46.9	37.5	23.6	18.9	24.6	19.7	25.7	20.6	31.3	25	35	35
SLG184J	47.3	37.8	50	40	50	40	50	40	25	20	26.3	21	27.4	21.9	35	28	40	40

SLG184 外形图 External dimension

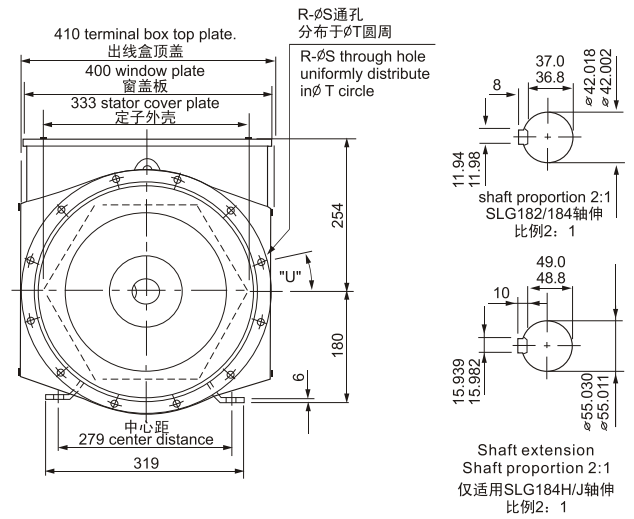
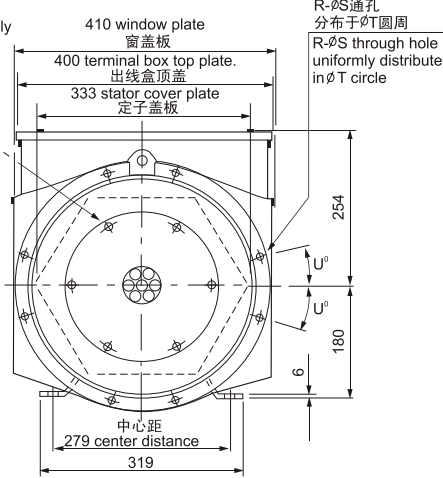
单轴承 SINGLE BEARING



双轴承 DOUBLE BEARING



AR-φAS通孔均布于φAT圆周
AR-φAS through-hole uniformly distribute in φAT circle



DIMENSION 尺寸(mm)

型号 Model	A				B				N.W/G.W (kg) (kg)		LXWXH (mm)
	SAE2	SAE3	SAE4	SAE5	SAE2	SAE3	SAE4	SAE5			
SLG184E	471	443.5	431.5	443.5	186	159	147	159	120	133	565X485X620
SLG184F	561	533.5	521.5	553.5	276	249	237	269	150	156	675X510X620
SLG184G	561	533.5	521.5	553.5	276	249	237	269	156	172	675X510X620
SLG184H	620.5	593.5	581.5	613.5	291	264	252	284	216	226	740X510X620
SLG184J	620.5	593.5	581.5	613.5	291	264	252	284	226	236	740X510X620

DIMENSION 尺寸(mm)

型号 Model	A	B	C	D	E	F	G	N.W (kg)	G.W (kg)	LXWXH (mm)
	SLG184E	551.5	177	65	228	82	77	212	131	141
SLG184F	641.5	267	65	228	82	77	212	154	164	740X510X620
SLG184G	641.5	267	65	228	82	77	212	170	180	740X510X620
SLG184H	734.5	282	105	268	110	100	252	220	230	820X510X620
SLG184J	734.5	282	105	268	110	100	252	230	240	820X510X620

FLANGE 法兰式过渡套件 (mm)

S.A.E.NO.	AW	R	S	T	U°	W	X	C	D
2	132.3	12	11	466.7	15	447.6	489	172	156
3	105	8**	11	428.6	15	409.5	451	145	129
4	93	8	11	381.0	15	361.9	402	133	117
5	125(105)***	8	11	333.3	22.5	314.3	356	165(145)***	149(129)***
6*	136.7	8	11	285.8	22.5	266.7	308	176.7	160.7

FLANGE 法兰式过渡套件 (mm)

S.A.E.NO.	R	S	T	U°	V	W	X
1	12	12.7	530.2	15	500	511.17	553
2	12	11	466.7	15	432	447.6	495
3	12	11	428.6	15	396	409.5	451
4	12	11	381.0	15	352	361.9	403
5	8	11	333.3	22.5	301	314.3	356

注:*SAE6需另加一厚31.7mm的过渡板,故"A"尺寸也相应增加31.7mm

**SAE3的8个孔分布于12等分的圆周上

***SLG184E的AW尺寸为105, C尺寸为145, D尺寸为129

NOTE:* "A" dimension should extend 31.7mm corresponding to an additional spacer plate added on SAE6

** 8 holes of SAE3 uniformly distribute on the circle spaced as 12.

*** The AW dimension of 184E should be 105,C dimension is 145,D dimension is 129.

注:SAE5不适用于SLG 184H/J

DISC COUPLING 盘片式联轴器 (mm)

S.A.E.NO.	AN	AR	AS	AT	V
6.5 Δ	30.16	6	8.7	200.0	215.8
7.5 Δ	30.16	8	8.7	222.2	241.2
8	61.9	6	11	244.5	263.4
10	53.98	8	11	295.3	314.2
11.5	39.68	8	11	333.4	352.3
14 Δ	25.4	8	13.5	438.2	466.5

注: SAE14仅适用于SLG184H/J铁心;SAE6.5,7.5不适用SLG184H/J铁心

NOTE: Δ SAE14 is applicable for SLG184H/J iron core;

SAE6.5&7.5 are not applicable for SLG184H/J iron core.

SINGLE BEARING SAE NO SELECTOR 单轴承驱动片和过渡法兰配套表

	SAE 6.5	SAE 7.5	SAE 8	SAE 10	SAE 11.5
SAE 3	●	●		●	●
SAE 4		●	●		
SAE 5	●	●			
SAE 6	●				